

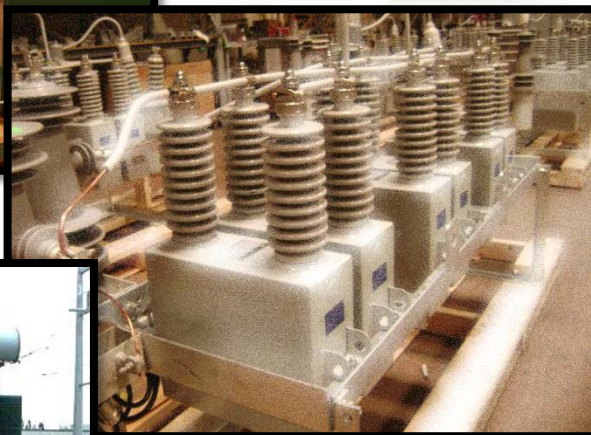
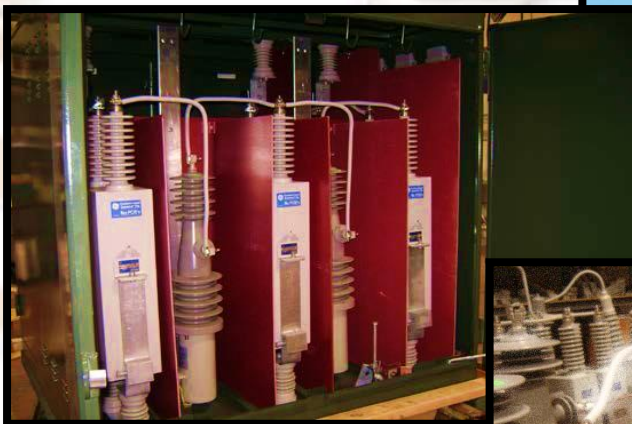


CAPACITOR BANKS

★ STATION CLASS

★ PADMOUNT DISTRIBUTION

★ POLE MOUNTED



5051 Edison Ave
Chino, CA 91710
TEL: 909-594-9637
FAX: 909-595-0379
www.scott-eng.com



June 2014

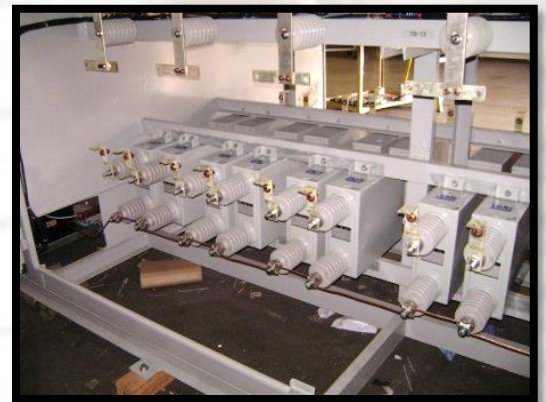


METAL ENCLOSED CAPACITOR BANKS

Scott Engineering offers a large line of free standing, self-supporting, metal enclosed capacitor banks. These capacitor banks are shipped completely assembled, including: capacitors, switches, fuses, PT's and other accessories when specified. The units are designed with voltage ranges from 2.4 kV to 38 kV and kVAR as required.

STATION CLASS CAPACITOR BANK STANDARD FEATURES

- 12 Gauge cold-rolled steel construction throughout
- MIG welding throughout
- Meets ANSI and Western Underground Tamper Resistance standards
- Paint system meets ANSI C57-12.28
- Three or four inch structural base, hot-dipped galvanized after fabrication
- Roof is cross-kinked for strength and drainage
- Stainless door hinges
- Bold, clear cautionary labels
- Circuit diagram and low voltage wiring diagram in control compartment
- Positive door stop locks when door in open position
- Rear doors for easy access to capacitors
- Isolated control compartments



STATION CLASS CAPACITOR BANK STANDARD FEATURES

- Deadfront or Livefront design
- Galvanneal or stainless steel construction
- Finish color
- Door latch can be Penta, Hex Bolt, or Padlockable
- One or two bushing capacitors
- Group or individually fused capacitors
- Vacuum, oil, or Circuit Breaker Switches
- Visible Break Switch
- Ground Switch, 3 or 4 poles
- Mechanical or key Interlocks
- Lightning Arrestors
- Neutral unbalance relay
- Reactors
- View Windows
- Oil or Dry Potential transformers, fused or non-fused
- Heaters and Exhaust Fans



*For any custom requirements, please contact Scott Engineering
or your local Scott Engineering Representative*

Scott Engineering, Inc.

5051 Edison Ave
Chino, CA 91710
Phone 909-594-9637
Fax 909-595-0379



PADMOUNT DISTRIBUTION CAPACITOR BANKS

DISTRIBUTION CAPACITOR BANK STANDARD FEATURES

- 12 Gauge cold-rolled construction throughout
- MIG welding throughout
- Meets ANSI and Western Underground tamper resistance standards
- Paint system meets ANSI C57-12.28
- Three inch channel base is hot-dip galvanized after fabrication
- Roof is cross-kinked for strength and drainage
- Stainless steel door hinges
- Bold, clear cautionary labels
- Circuit and low voltage diagram in control compartment
- Positive door stop locks door in open position
- Doors provided with padlockable handle with vandal resistance three point latching
- Doors have lift-off capability in open position only
- NEMA Grade 3/16" GPO-3 Barriers as required



DISTRIBUTION CAPACITOR BANK OPTIONAL FEATURES

- Deadfront or Livefront design
- Galvanneal or Stainless Steel construction
- Coastal Finish with Inorganic Zinc Primer
- Vacuum or Oil Switches
- Oil or dry potential transformers fused or non-fused
- 2.4 kV to 38 kV
- 150 kVAR to 1800 kVAR
- Lightning Arrestors
- Reactors
- Capacitors controls



Scott Engineering, Inc.

5051 Edison Ave
Chino, CA 91710
Phone 909-594-9637
Fax 909-595-0379

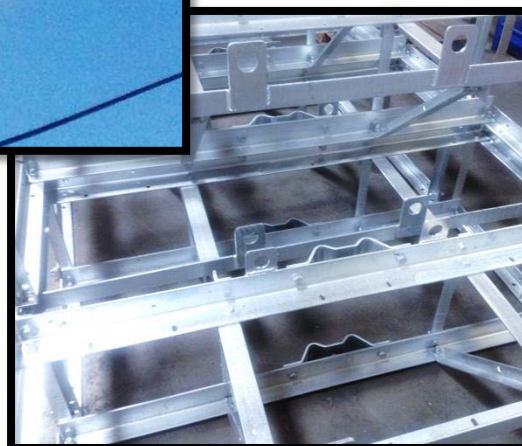
*For any custom requirements, please contact Scott Engineering
or your local Scott Engineering Representative*



POLE MOUNTED CAPACITOR BANKS

POLE MOUNTED CAPACITOR BANK STANDARD FEATURES

- Galvanized Steel or Aluminum Construction
- Vacuum or Oil Switches
- 2.4 kV to 38 kV
- 150 to 1800 kVAR
- Oil or dry Potential transformer
- Junction Box



*For any custom requirements, please contact Scott Engineering
or your local Scott Engineering Representative*

Scott Engineering, Inc.

5051 Edison Ave
Chino, CA 91710
Phone 909-594-9637
Fax 909-595-0379